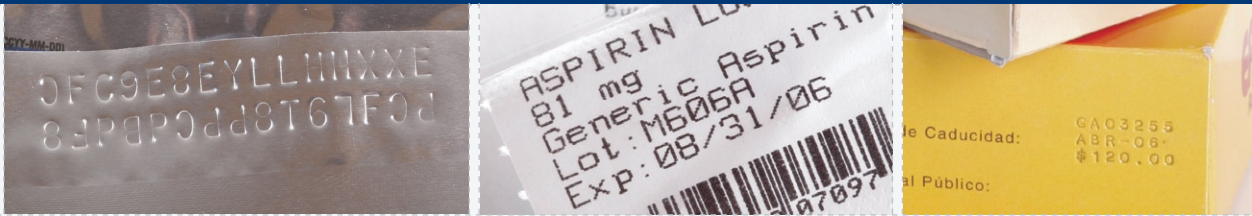


CODE INSPECTOR



Multiple Application Capabilities

- OCV/OCR On Alpha-Numeric Text Strings
 - Lot Numbers - Expiration Dates - Label ID Numbers and DIN/NDC's
- On-Line Linear & 2-D Bar Code Verification & Grading According to ISO/IEC Standards
- Code Verifications On Clear, White Paper & Expanded-Content Labels, Preprinted Labels, Over-Printed Labels, Pouches, Sachets, Strip Packs, Cartons and etc.
- Embossed Code Verification
- Serialized Code Verification (ex. Bollino)
- Anti-Counterfeit Device Verifications (RFID tags, holograms, UV codes and etc.)



Optical Camera

System Features

- Easy-to-use HMI
- 21 CFR Part 11 Compliance
- 100% On-Line Inspection (no impact to line speeds)
- Inspection Expandability (component presence, cap presence and orientation, crimp verification and etc.)
- Complete Product Tracking
- Multiple Reject Tracking
- Integration of Additional Options (external bar code readers, sensors and etc.)
- Stand-Alone Units (PLC integration not required)
- Complete System Integration (no 3rd party integrators)



Digital Camera

Optional Services

- Validation Protocols (IQ, OQ)
- Support Throughout US and Europe
- Service Plans (Gold, Silver, Bronze and etc.)

Control Panel



CODE INSPECTOR

Inspection Capabilities

Speed	Up to 2000 PPM
Standard Analyses	Optical Character Verification (OCV) (OCV includes Code Segmentation, Font Libraries and Teach Function) Optical Character Recognition (OCR) Bar Code Reading & Verification Bar Code Grading
Reject Tracking	Individual Reject Configuration Per Inspection Window Multiple Reject Tracking
Code Reading	Variable Code Reading (RSS, UPC/EAN, DataMatrix, Pharmacode) - Color Mark - Lot Numbers & Expiration Dates DIN/NDC's

Camera and Lighting

Camera	One (1) up to Eight (8) B/W High-Resolution CCD Cameras, Color Cameras Also Available
Resolution	640 x 480 Pixels
Color	256 Gray Scale
Lighting	White Flash LED's/Infra Red LED's

Operating Unit Properties

Control Panel	Stainless Steel
Monitor	15" SVGA TFT Intuitive Touch Screen
CPU	Pentium III 933 MHz up to Intel® Core™ 2 Duo
Operating System	Windows XP
Display Tools	Real-time Code Image - Defect Location and ID - Last Five Defect Images - Live Data Statistics - System Status Message Help Screen - Simple, Step-by-step Operating Procedure
Real-time Statistics	Digital Display, Histogram
Light Indicators	Power, Reject, Alarm
Power Supply	100 – 240 VAC, 50 – 60 Hz
Inputs / Outputs	16/64 Expandable
On-screen Languages	English, French, Spanish

System Options

Panel Enclosure	Nema 4 X Screen
Validation	Validation Protocols (IQ, OQ)
Stand	Double Swivel U-Shaped Stand & Mounting Options



12345678901234

DataMatrix



UPC Code



DataMatrix and Color Mark

LOT 43BN67 EXP 2004/05



RSS Composite